

THE CASE FOR INVESTING IN CHRONIC MALNUTRITION

Chronic malnutrition is a preventable disease caused by an inadequate nutrient intake in the first 1,000 days of a child's life (from a woman's pregnancy until age two).

GLOBALLY, MALNUTRITION COSTS US\$3.5 TRILLION TO THE ECONOMY EVERY YEAR.

REDUCED ABILITY TO LEARN: 70% of the brain is formed within the 1,000 days.



more likely to drop out of school and earn 22% less as adults

WEAK IMMUNE SYSTEM: higher risk of dying from infectious diseases.



Overall, per capita income loss is around 7% of GDP

STUNTED PHYSICAL GROWTH: low-height-for-age.



a 1% loss in adult height results in a 1.4% physical productivity loss

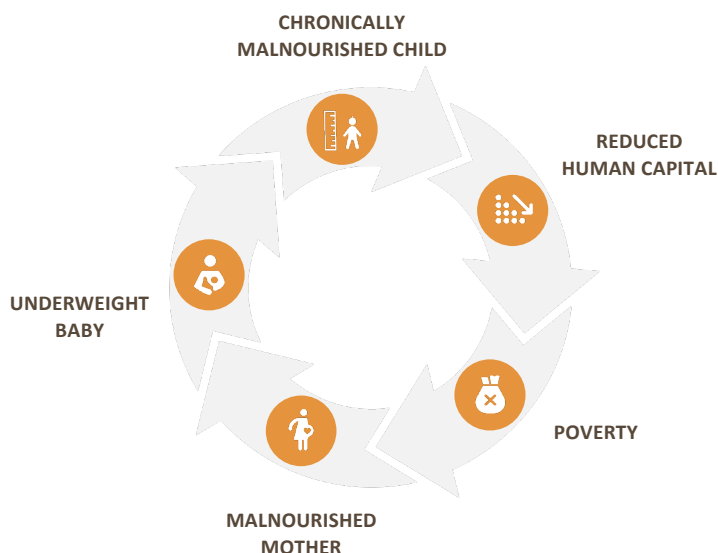
MALNUTRITION SLOWS ECONOMIC GROWTH AND PERPETUATES POVERTY

\$1 INVESTED IN NUTRITION = \$11 RETURN

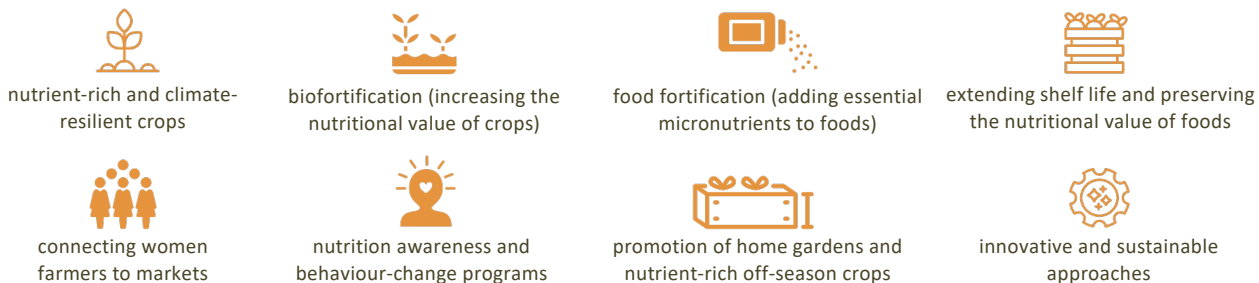
The investments in interventions to **reduce chronic malnutrition by 1/3 globally** would generate about **\$417 billion in economic benefits**. Every dollar invested in nutrition generates \$11 in benefits to local economies.

SCALE OF THE PROBLEM:

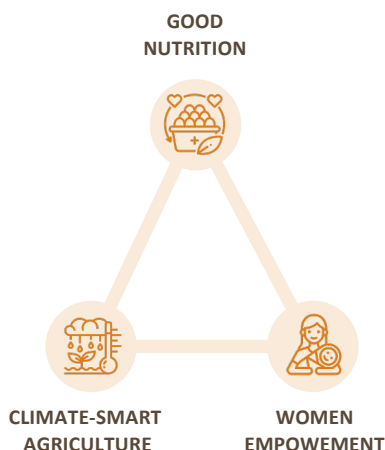
144 MILLION CHILDREN GLOBALLY, 1 IN EVERY 3 CHILDREN UNDER 5 IN SUB-SAHARAN AFRICA AND SOUTH ASIA.



UNITLIFE INVESTS IN:



UNITLIFE supports solutions at the intersection of **nutrition**, nutrition-sensitive and climate-smart **agriculture**, and the empowerment of **women**, with the primary goal of improving the nutritional status of children and future mothers.



UNITLIFE'S OBJECTIVE:

100



MOBILIZE US\$ 100 MILLION IN THE NEXT 5 YEARS TO PROVIDE 1.5 MILLION MOTHERS AND CHILDREN WITH ACCESS TO NUTRITIOUS FOODS AROUND THE WORLD.



ABOUT UNITLIFE

UNITLIFE is the United Nations initiative fighting chronic malnutrition through innovation.

UNITLIFE finances nutritious food systems and invests in women's empowerment and climate-smart agriculture. With this approach, UNITLIFE aims to save the next generation.